



# Installation manual

## Monitor arm

ceiling installation



# CONTENTS

- 3** What you have received
- 4** What you need
- 5** Kit cables informations
- 6** Fixing ceiling mounting set
- 7** Regulation of the column
- 8** Cables and regulation of the blind angle
- 9** Mounting the column
- 10** Mounting the cover
- 11** How to adjust the blind angle
- 12** The rotation system
- 13** Final assembly (1)
- 14** Final assembly (2)



# WHAT YOU HAVE RECEIVED

You've received two boxes containing the arm and all its accessories.  
The following lists show you each single item:



**1x** Quality certificate



**A**

**1x** Ceiling mounting set



**B**

**4x** Fixing set:  
- ceiling plug  $\varnothing$  10 mm  
- washers M10  
- hexagon head screws M10



**C**

**1x** Silicon O-ring



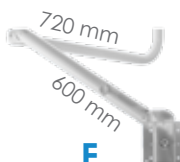
**D**

**1x** Cover



**E**

**2x** Hexagon socket button head screws (size 6 x 20 mm);  
**1x** Hexagon socket button head screws (size 4 x 20 mm);  
**2x** Bolts (size 7 mm)



**F**

**1x** Arm for monitors with 5000 mm of cables



**G**

**1x** Chrome washer



**H**

**1x** Column  
(length 1300 mm)



## WHAT YOU NEED

To install the arm you need common tools that we didn't include in the delivery. See which tools you need in the following list:



Pencil



Wrench  
(size 17, 7)



Scissors



Allen keys  
size (10, 6, 5, 3)



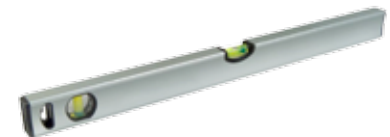
Probe  
(optional)



Hammer drill  
(tips  $\varnothing$  6 and 12 mm)



Metal saw



Spirit level

## HOW LONG IT TAKES

The installation of the arm can be easily carried by two people in about 45 minutes.



2 people



45 minutes



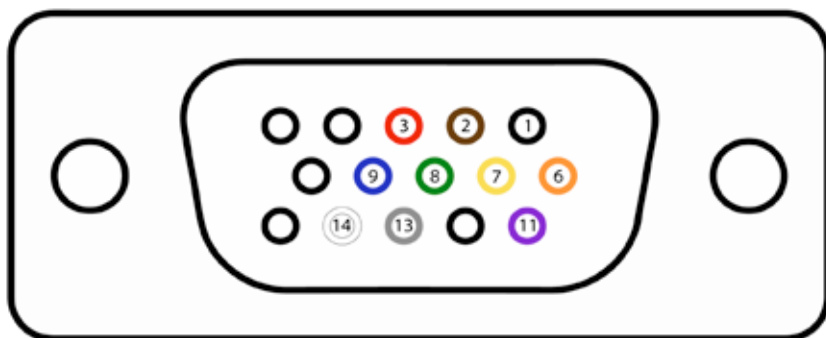
Before installing the ceiling mounting set it's necessary to check that the ceiling is strong enough to sustain the weight of the device that will be installed. The ceiling plugs included in the kit are suitable for ceiling made in concrete (min thickness: 150 mm) or masonry. For the other type of ceiling it's necessary to check the right solution with a construction engineer.

## KIT CABLES INFORMATIONS

- cables are fully integrated into the arm;
- cables are 5m long, so you may have 3m of free cable on the mount side of the arm;
- the mount side of the cable is without connectors;
- the head side of the cable is with connectors (VGA);
- you may need to adjust the cable length according to your needs;
- when you finish all operations and adjustments you can install the connectors on the mount side of the arm.



## FOLLOW THE SCHEME TO INSTALL CONNECTORS



### DB15 connector

View of the side where the terminals have to be inserted



- |          |           |            |
|----------|-----------|------------|
| 1. Black | 6. Orange | 9. Blue    |
| 2. Brown | 7. Yellow | 11. Purple |
| 3. Red   | 8. Green  | 13. Gray   |
|          |           | 14. White  |

**The ground has to be welded from the metallic side of the connector DB15.**

## FIXING CEILING MOUNTING SET



Place the *ceiling mounting set (A)* on the predetermined point of the ceiling and mark with the pencil four points to drill the ceiling.



Use the hammer drill with a tip of 12 mm diameter.



Repeat the operation for the four fixed points and insert the ceiling plugs.



Replace the *ceiling mounting set (A)* and insert all four *hexagon head screws (B)*.



Pay attention to where you want to route the cables: they can be inserted above the ceiling or slid along it and hidden by ducts.

## REGULATION OF THE COLUMN



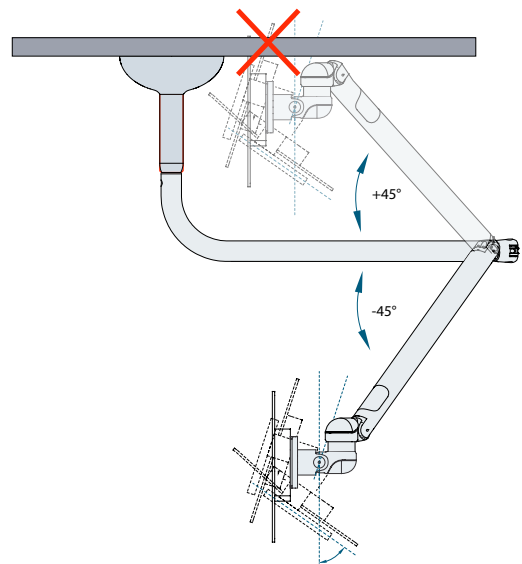
Tighten the *hexagon head screws* (B) with the allen (size 10) for a perfect fixing.



Take the *column* (H) and insert it into the *ceiling mounting set* (A). Check if the height of the *column* (H) is suitable for your needs.



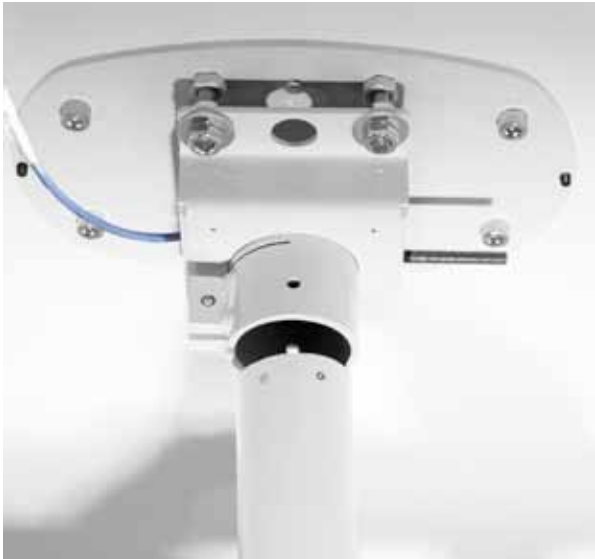
You can adjust the length of the *column* (H) by cutting it with a metal saw or a flex. This operation may take a few minutes (we recommend to use a flex).



Pay attention to the measures of the *column* (H). If the *column* (H) is too short, the monitor could touch the ceiling (the arm can bend up from  $-45^{\circ}$  to  $+45^{\circ}$ ).



## CABLES & REGULATION OF BLIND ANGLE



Use the probe to facilitate the passage of cables (cut them if needed). Run the cables of the arm (F) through the column (H) and through the ceiling mounting set (A).



Before fixing the column (H) (allen size 6) to the ceiling mounting set (A) it's important to read page 11 where it's explained that the arm (F) has a rotation of 350° and there is a blind angle of 10°.



Tighten the two screws as in the figure to fixing further the column (H).



Use an allen (size 5) to tighten the screws.



Usually the blind angle is situated towards and/or close to an obstacle: a wall, a cabinet, etc. (see page 11).



## MOUNTING THE COLUMN



Tighten both screws of the ceiling mounting set. (A) as in figure.



We recommend to drill the column (H) with the hammer drill (tip  $\varnothing$  6.5 mm) as in the figure.



Drill both sides of the column (H).



Insert the hexagon socket button head screw (E) as in figure (size 4).

## MOUNTING THE COVER



Fix the *hexagon socket button head screw (E)* with two *bolts (E)* (one for side) and tighten them with the wrench (size 7).



Screw off the three screws as in figure with the allen (size 3) and remove the tip from the *column (H)*. The tip is very important to determine the blind angle (see page 11).



Insert the cover *(D)* and the *silicon O-ring (C)* in the *column (H)*.



Leave the cover *(D)* and the *silicon O-ring (C)* to the ceiling mounting set *(A)* as in figure.

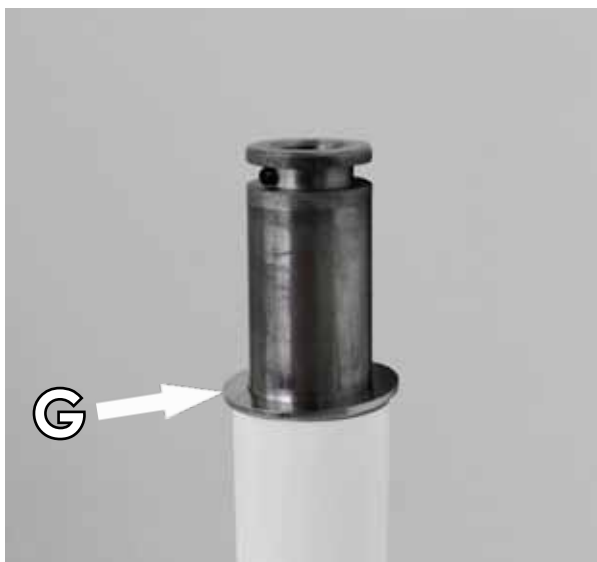
## HOW TO ADJUST THE BLIND ANGLE



The next steps are essential to set the correct angle of rotation of the *arm* (F). Take the tip previously removed from the *column* (H).



Move the locking component to the outside as in figure.

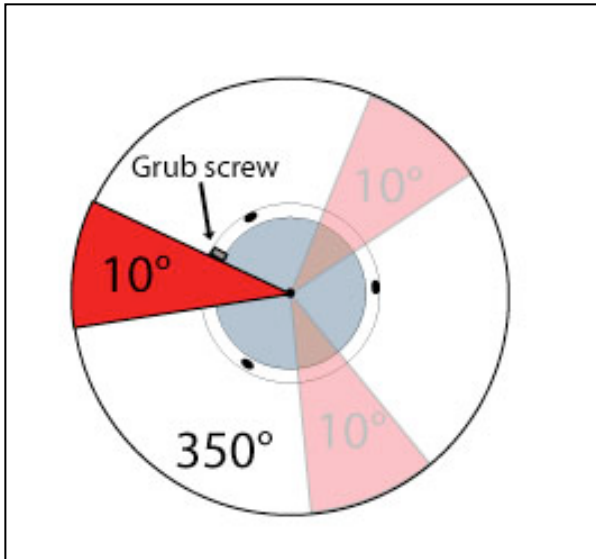


Insert the *chrome washer* (G) into the pivot of the *arm* (F) as in figure (the round part has to be inserted downward).



Then Insert the tip into the pivot and push in the locking component as in figure.

## THE ROTATION SYSTEM



The rotation system provides a rotation of 350 ° with a blind angle of 10 °. So, the cables inside the arm (F) will not rotate and risk breaking.



Turn the arm (F) to find the blind angle where the rotation system stops. A grub screw, inserted inside the mechanism (as in figure), blocks the rotation.



The mechanism provides in total three rotation positions in correspondence of the three screws previously removed from the column (H).



Once checked that the blind angle is in the right position, hook the tip of the arm to the column (H).

## FINAL ASSEMBLY (1)



Once inserted the arm (F), tighten the three screws (size 3) to secure the column (H).



Check the perpendicularity of the column (H) using the spirit level.



If necessary, adjust the tilt of the whole mechanism using the two screws as in figure (size 17).



After having adjusted the perpendicularity of the whole mechanism, realize the electrical connections.

## FINAL ASSEMBLY (2)



Lift the cover (D) and the silicon O-ring (C).



Insert the two hexagonal socket button head screws (E) in the two side holes as in figure (size 6).



In this way the cover (D) has been fixed to the ceiling mounting set (A).



The monitor arm is now correctly installed!



# ARMS&MOUNTS

DESIGNED AND MANUFACTURED IN ITALY

[www.arms&mounts.it](http://www.arms&mounts.it)

